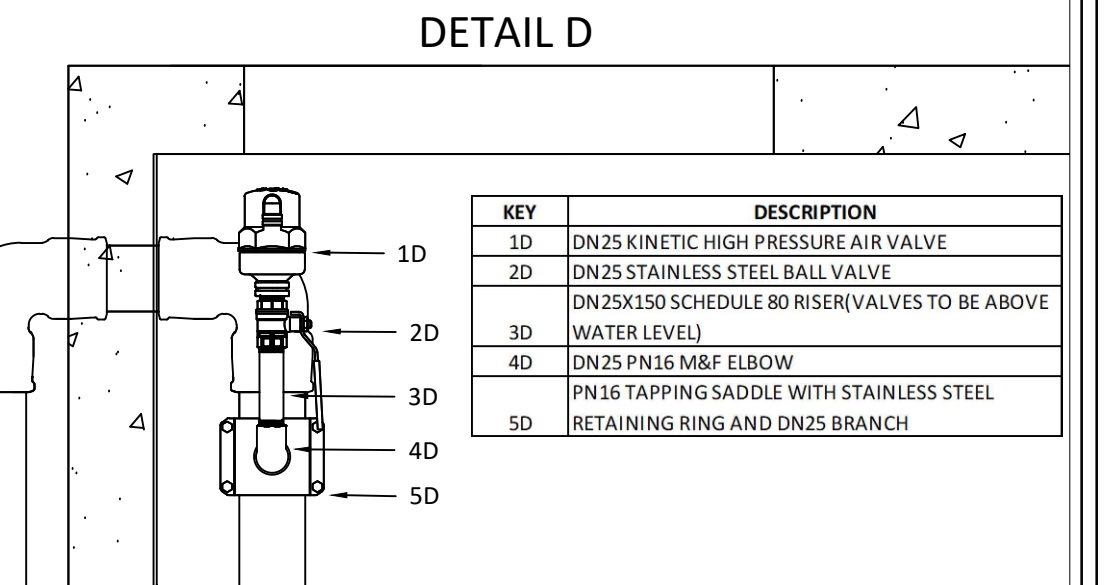
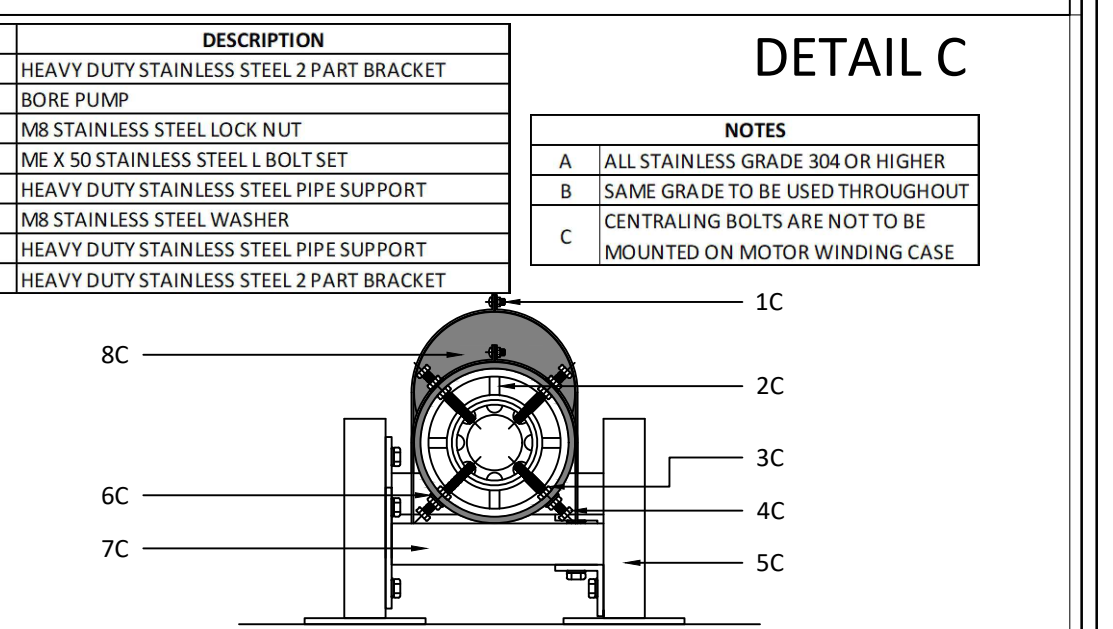
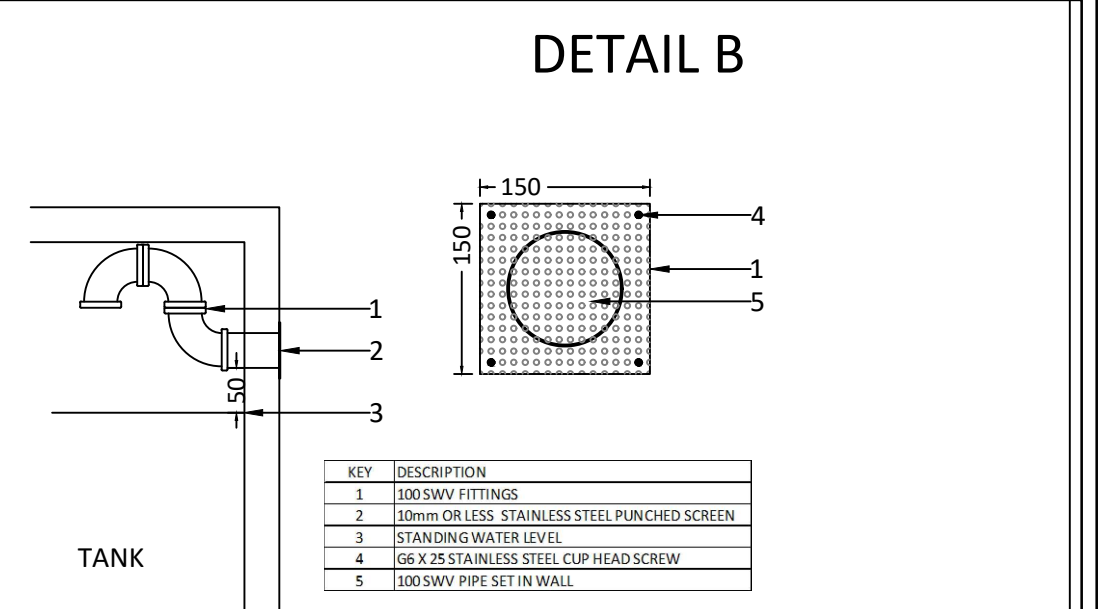
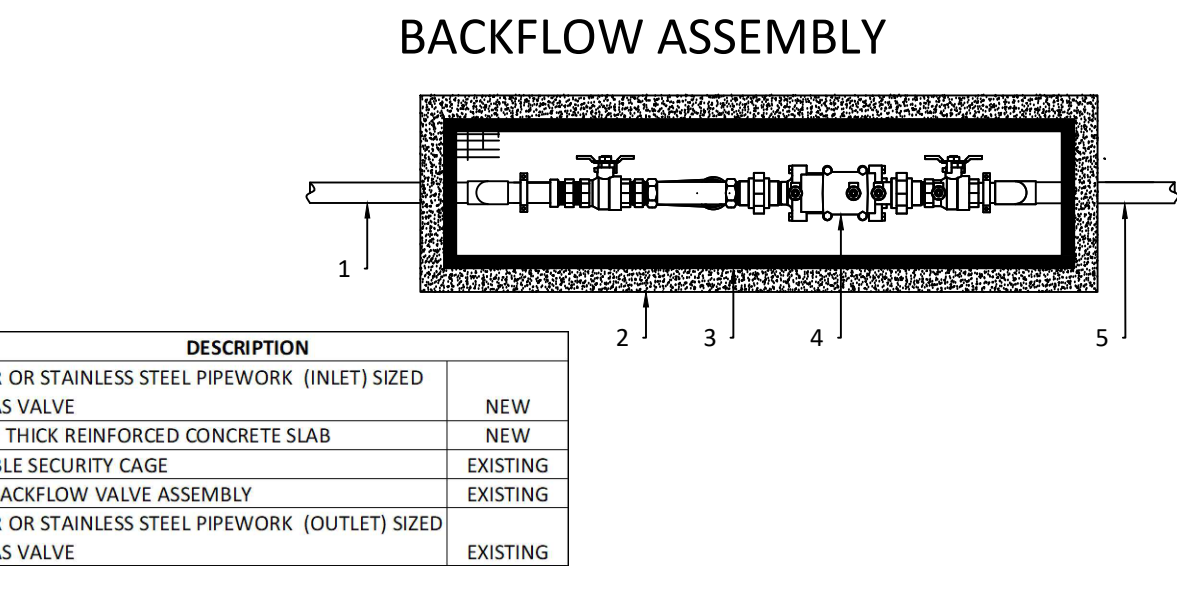
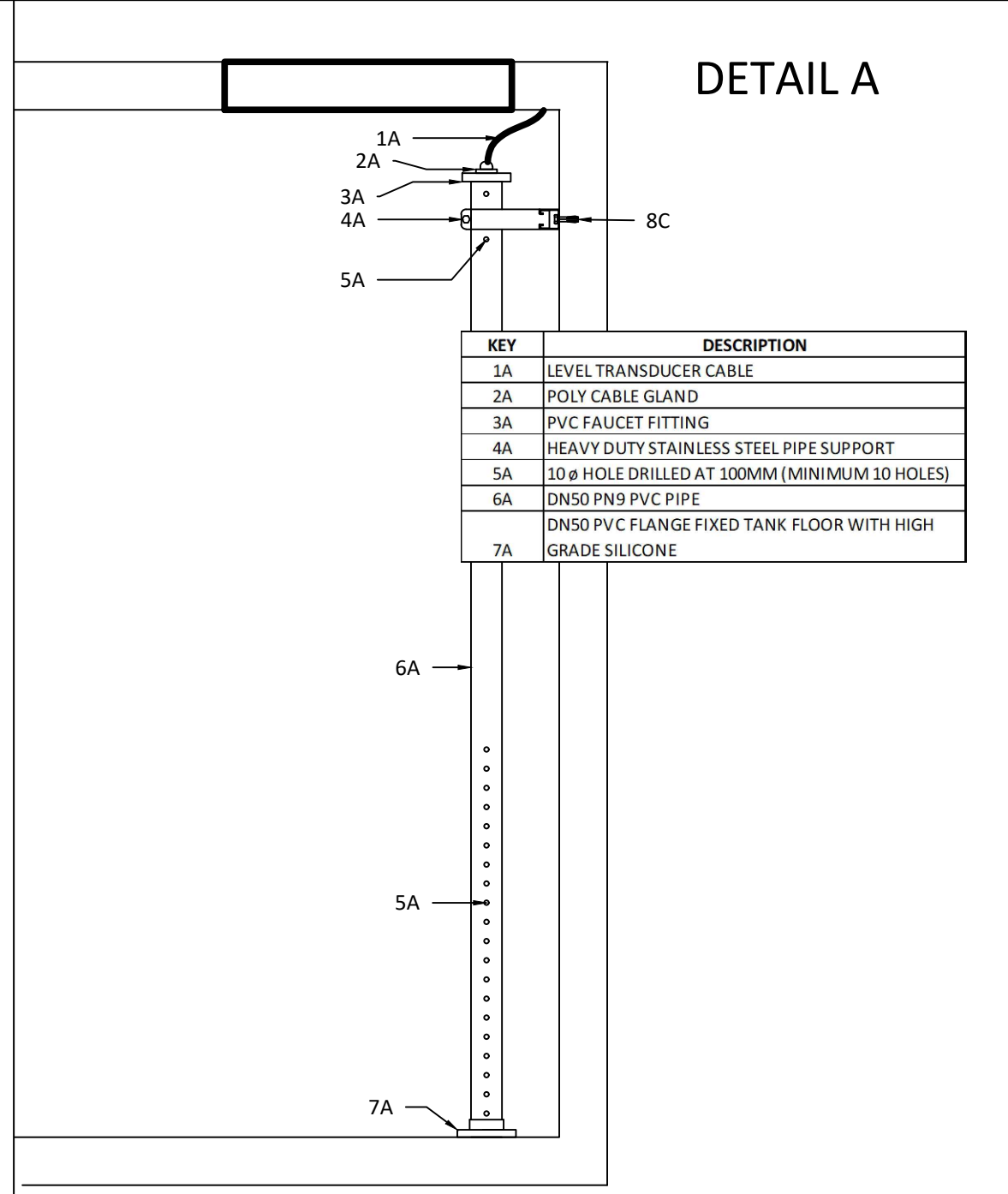
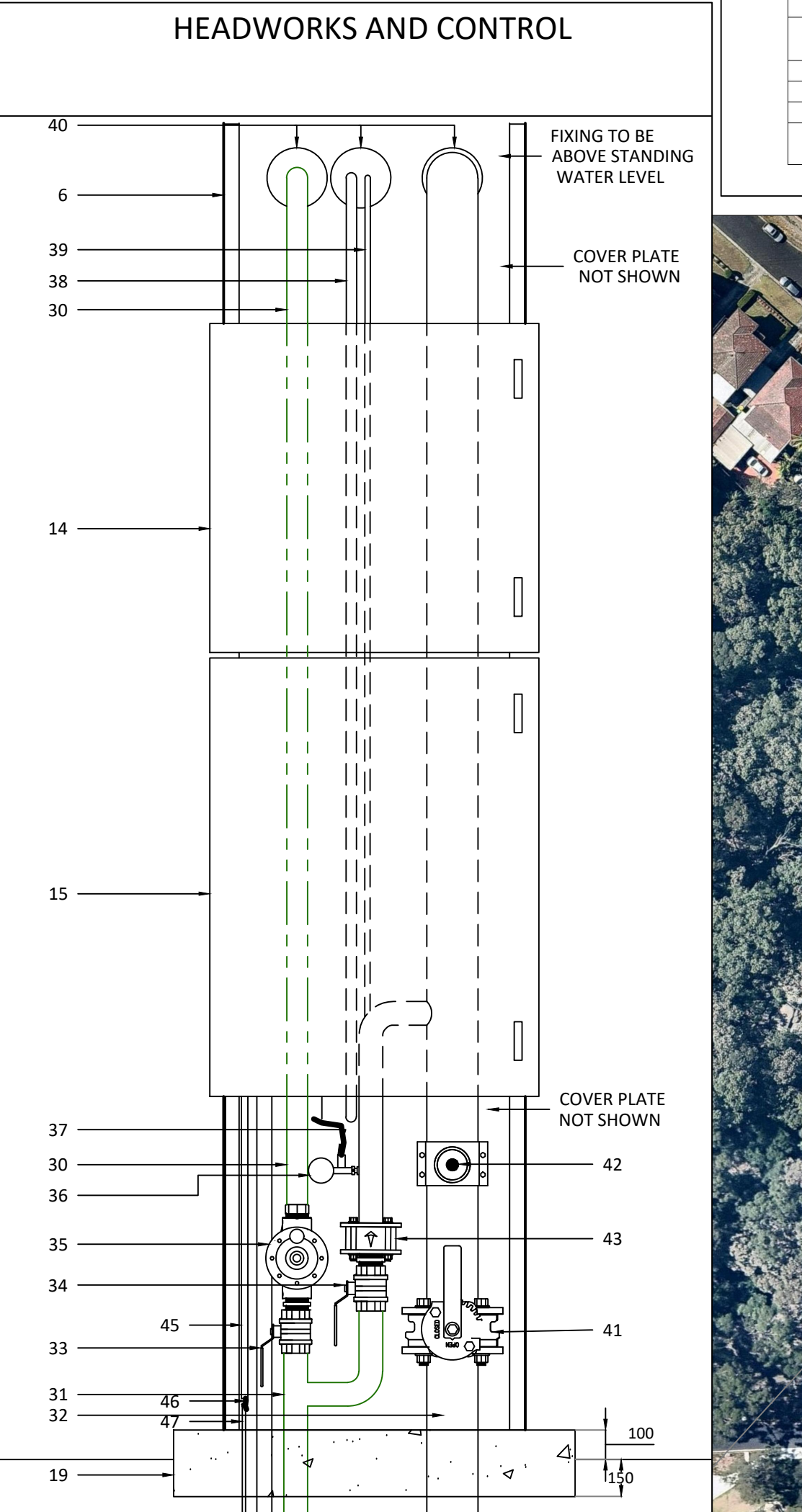


TABLE A MAINLINE VALVE TABLE			TABLE B TANK FILL							
			ITEM 31 SUPPLY PIPE	ITEM 30 FILL PIPE	ITEM 33 BALL VALVE	ITEM 34 BALL VALVE	ITEM 35 FILL VALVE	ITEM 41 VALVE	ITEM 43 NON- RETURN	
			40	40	40	40	40	40	40	
MAINLINE SIZE	ITEM 5 NON- RETURN	ITEM 12 DISCHARGE PIPE	50	40	40	40	40	40	40	40
63	50	63	63	40	40	40	40	40	50	40
75	50	75	75	40	40	40	40	40	50	40
90	80	90	90	50	50	50	50	50	80	50
110	100	110	110	80	80	80	50	80	100	50
125	100	125	125	100	100	100	50	100	100	50
160	150	160	160	100	100	100	50	100	15	50
200	200	200	200	150	150	150	50	150	200	50



10/150mm diameter P.V.C
columns reinforced with
1-N12 bars full height.

150mm thick
walls

130mm ROOF SLAB
SL82 Fabric top
& bottom

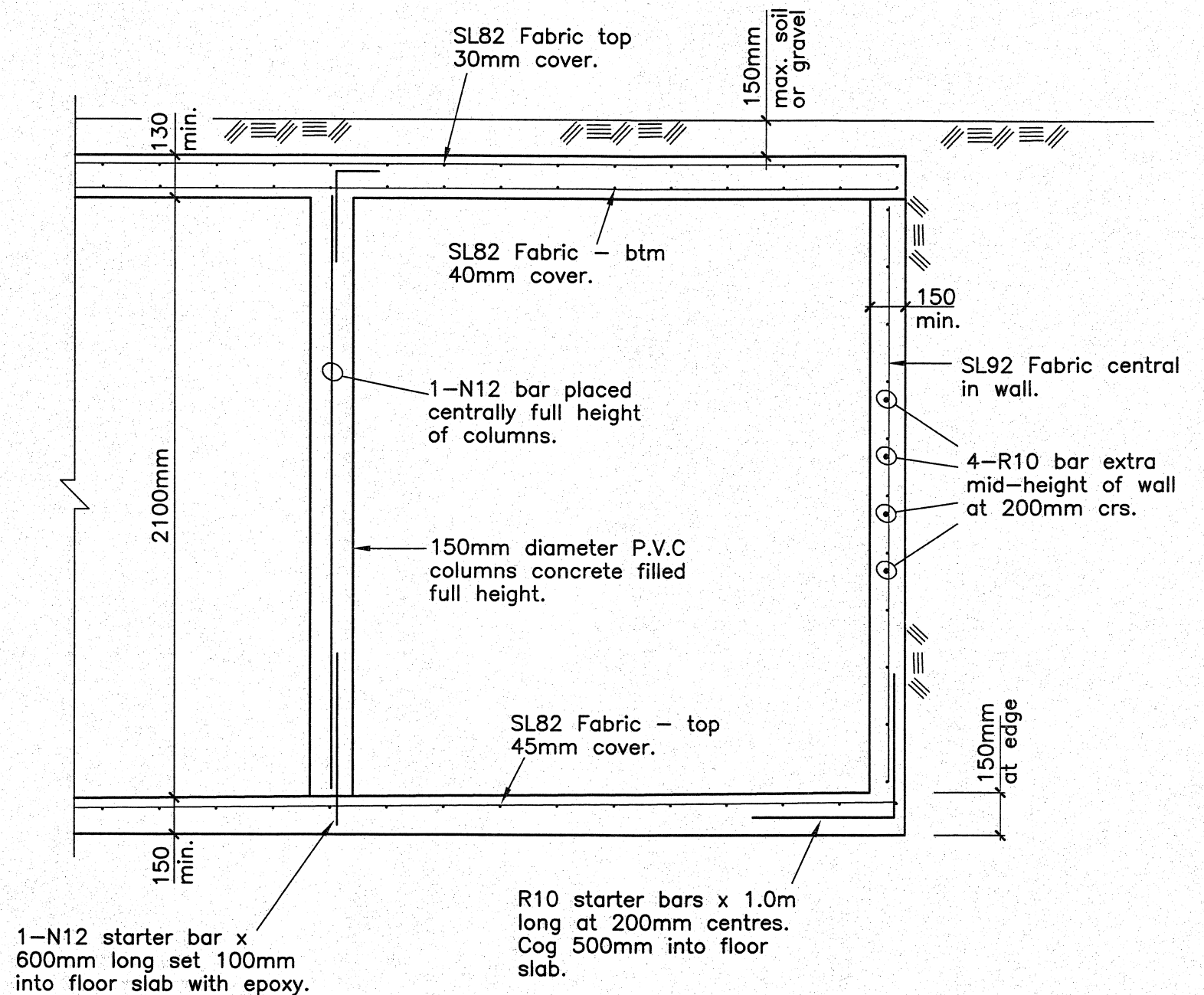
PLAN.

9600mm approx.
Internal diameter

NOTES:

1. All dimensions in millimetres.
2. Tanks to be fitted with one overflow pipe.
3. Base of tank to be excavated to bearing on firm uniform natural ground with a safe bearing capacity of at least 200kPa.
4. Characteristic compressive strength to be 32MPa in accordance with AS3600 and have a minimum slump of 80mm.
5. Reinforcement to be supported on bar chairs spaced at 600mm centres bothways. Lap one uncut wire panel plus 25mm at splices.
6. The roof slab is designed for light loading and is unsuitable for crowd load.
- 7.

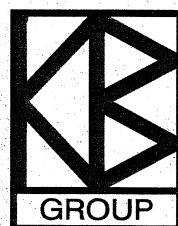
The tank has been designed with reference to the requirements of "Concrete Structures for Retaining Liquids, AS3735-2001" and "Concrete Structures, AS3600-2018".



DETAIL - TYPICAL SECTION.

- Adequate drainage at base of excavation must be provided to prevent uplift due to buoyancy when empty.

This drawing is the property of Kneebone, Beretta & Hall Pty Ltd and Panthers Concrete Tanks Pty Ltd and shall not be copied or reproduced in whole or part without written permission.



KNEEBONE, BERETTA & HALL PTY LTD

CONSULTING STRUCTURAL & CIVIL ENGINEERS

4 MACQUARIE AVENUE, PENRITH NSW 2750
PHONE: (02) 4731 3833 FACSIMILE: (02) 4721 5442
WEBSITE: www.kneeboneandberetta.com
E-MAIL ADDRESS: kbhallengineers@gmail.com

A.C.N 002 419 767
A.B.N 36 822 442 203



Directors:
Trevor B. HALL, B.Sc (Eng), F.I.E. Aust., C.P. Eng.
Peter R. ANDRESEN, B.E. M.I.E. Aust, C.P. Eng.

SCALE 1:100, 1:20
DATE 7.11.19
DRAWN P. Martin
DESIGNED P. Andresen
APPROVED *M. Andresen C.P. Eng*

Client: Panther Concrete Tanks.
Standard 150,000 litre,
9.6m Diameter Tank.

DRAWING NUMBER
60056-37A
ISSUE